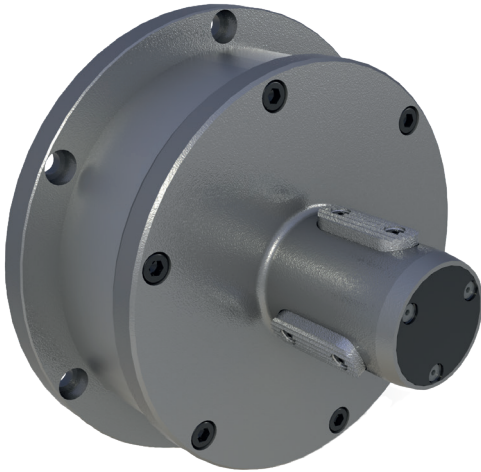


# MP Type

## AIR-MECHANICAL EXPANDING CHUCK WITHOUT INNER BLADDER



Made to measure, our shafts allow a good adequacy between our product and your needs.

Our technicians privilege the constraints such as torque, load and speed in order to better meet your requirements: web material and thickness, web tension, maximum web speed, max. and min. roll weights and widths, roll outer diameter (o.d.), core inner diameter (i.d.), bearing centres, etc.

### Benefits:

- Conceived for shaftless winding machines or for mobile frame winding stands
- Conceived for running with a reverse-side cone or by pair
- Adapted to high torque and significant loading applications
- « Monoflow » pneumatic process allows easy and fast automatic operation

### Features:

- Standard or made-to-measure ranges for core diameters from 70 mm to 200 mm
- Possibility to use two different core diameters (double stage)
- Equipped with lugs (model MPT) or leaves (model MPCO)

[www.airmat.com](http://www.airmat.com)

France  
**AIRMAT Technology**  
Rue de l'Abbé Jerzy Popiełuszko  
BP 219  
F 62304 LENS Cedex  
T. +33 (0)3 21 79 31 20  
[airmat@airmat.com](mailto:airmat@airmat.com)

Deutschland  
**AIRMAT Wickeltechnik**  
Sundheimer Feld, 2  
Postfach 2045  
D 77694 KEHL/RHEIN  
T. +49 (0)7851 89 886-0  
[info@airmat.de](mailto:info@airmat.de)

Polska  
**AIRMAT Polska**  
Ul. Beskidzka 5  
PL 32-590 LIBIAŹ  
T. +48 32 627 39 25  
[biuro@airmatpolska.eu](mailto:biuro@airmatpolska.eu)