

MAP Type MULTI-BLADDERS AIRCHUCK WITH EXPANDING BARS

EXNG



Made to measure, our shafts allow a good adequacy between our product and your needs.

Our technicians privilege the constraints such as torque, load and speed in order to better meet your requirements: web material and thickness, web tension, maximum web speed, max. and min. roll weights and widths, roll outer diameter (o.d.), core inner diameter (i.d.), bearing centres, etc.

Benefits :

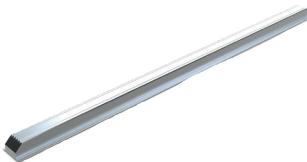
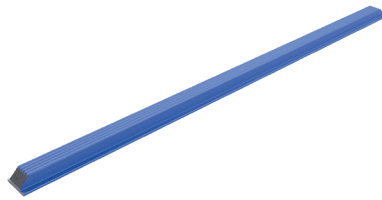
- Longer expansion area for multi-slits rewinding or offset roll winding
- Able to handle one or more varying-width reels
- Easy maintenance by changing bars and bladders without removing the journals
- Pre-centering bars reducing slack between shaft and core
- Appropriate for either paperboard, plastic or steel cores

Features :

- Made-to-measure design for cores of 70, 76 120, 150 up to 400 mm
- Extruded anodised aluminium section construction of body
- Respectively 25 to 100 mm crossing boring for normal or expanding shaft placing
- Aluminium or even steel section body construction
- Plastic or aluminium continuous expanding bars

By-products :

- Special boring for squared supporting shafts
- Screwing or clamping attachment
- Additional valve or direct connection
- Tangential valve



www.airmat.com

France
AIRMAT Technology
Rue de l'Abbé Jerzy Popiełuszko
BP 219
F 62304 LENS Cedex
T. +33 (0)3 21 79 31 20
airmat@airmat.com

Deutschland
AIRMAT Wickeltechnik
Sundheimer Feld, 2
Postfach 2045
D 77694 KEHL/RHEIN
T. +49 (0)7851 89 886-0
info@airmat.de

Polska
AIRMAT Polska
Ul. Beskidzka 5
PL 32-590 LIBIĄŻ
T. +48 32 627 39 25
biuro@airmatpolska.eu