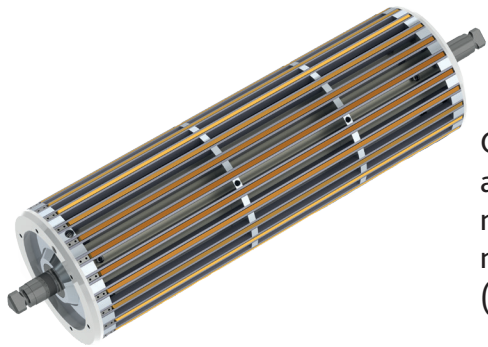


BEX Type

MULTI-BLADDERS AIRSHAFT WITH CONTINUOUS EXPANDING BARS



Made to measure, our shafts allow a good adequacy between our product and your needs.

Our technicians privilege the constraints such as torque, load and speed in order to better meet your requirements: web material and thickness, web tension, maximum web speed, max. and min. roll weights and widths, roll outer diameter (o.d.), core inner diameter (i.d.), bearing centres, etc.

Benefits :

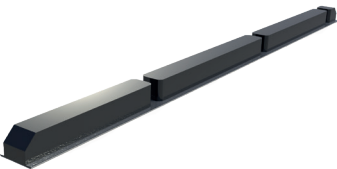
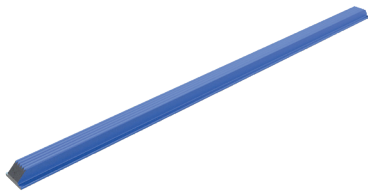
- Excellent conciliation between lightness and power
- Relatively lightweight product for large i.d. cores
- Longer expansion area and particularly aimed to high torque transmission
- Able to handle one or more varying-width reels
- Appropriate for paper, plastic or steel cores

Features :

- Made-to-measure design for core diameters from 200 to 500 mm
- Mainly aluminium section body construction
- Plastic or aluminium continuous expanding bars

Options :

- Cantilevered model, type «1/2 BEX», with flanged and/or shaft-ended journal



www.airmat.com

France
AIRMAT Technology
Rue de l'Abbé Jerzy Popiełuszko
BP 219
F 62304 LENS Cedex
T. +33 (0)3 21 79 31 20
airmat@airmat.com

Deutschland
AIRMAT Wickeltechnik
Sundheimer Feld, 2
Postfach 2045
D 77694 KEHL/RHEIN
T. +49 (0)7851 89 886-0
info@airmat.de

Polska
AIRMAT Polska
Ul. Beskidzka 5
PL 32-590 LIBIĄŻ
T. +48 32 627 39 25
biuro@airmatpolska.eu