

## **D** Type

# MONO-BLADDER AIRSHAFT WITH SHORT EXPANDING LUGS

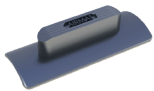


Made to measure, our shafts allow a good adequacy between our product and your needs.

Our technicians privilege the constraints such as torque, load and speed in order to better meet your requirements: web material and thickness, web tension, maximum web speed, max. and min. roll weights and widths, roll outer diameter (o.d.), core inner diameter (i.d.), bearing centres, etc.

### Benefits :

- Robust and powerful
- Able to handle one or more varying-width reels
- Maximum grip between shaft and core for unwinding operations requiring significant torque
- Appropriate for either paper, plastic or steel cores



### Features :

- Made-to-measure design for core diameters from 20 to 600mm
- Steel, aluminium or carbonfibre body construction
- Aluminium, steel or plastic lugs according to core material

### Others :

- Cantilevered model, type «1/2 D», with flanged and/or shaft-ended journal
- High-expanding model, type «D GE», for high varying internal diameter cores
- Special model «MN» with rotating-free shaft ends relative to shaft body

[www.airmat.com](http://www.airmat.com)

France  
**AIRMAT Technology**  
Rue de l'Abbé Jerzy Popiélusko  
BP 219  
F 62304 LENS Cedex  
T. +33 (0)3 21 79 31 20  
[airmat@airmat.com](mailto:airmat@airmat.com)

Deutschland  
**AIRMAT Wickeltechnik**  
Sundheimer Feld, 2  
Postfach 2045  
D 77694 KEHL/RHEIN  
T. +49 (0)7851 89 886-0  
[info@airmat.de](mailto:info@airmat.de)

Polska  
**AIRMAT Polska**  
Ul. Beskidzka 5  
PL 32-590 LIBIAZ  
T. +48 32 627 39 25  
[biuro@semecapolska.eu](mailto:biuro@semecapolska.eu)